

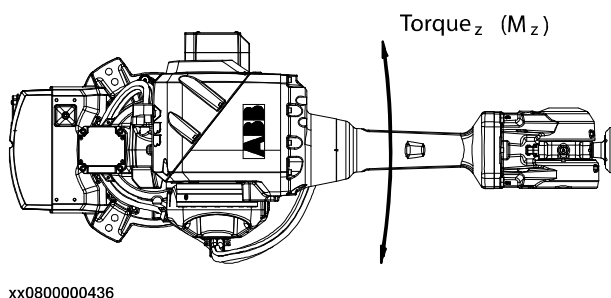
# 1 Description

## 1.3.3 Mounting the manipulator

Continued



武永康  
13913235524  
(微信同号)

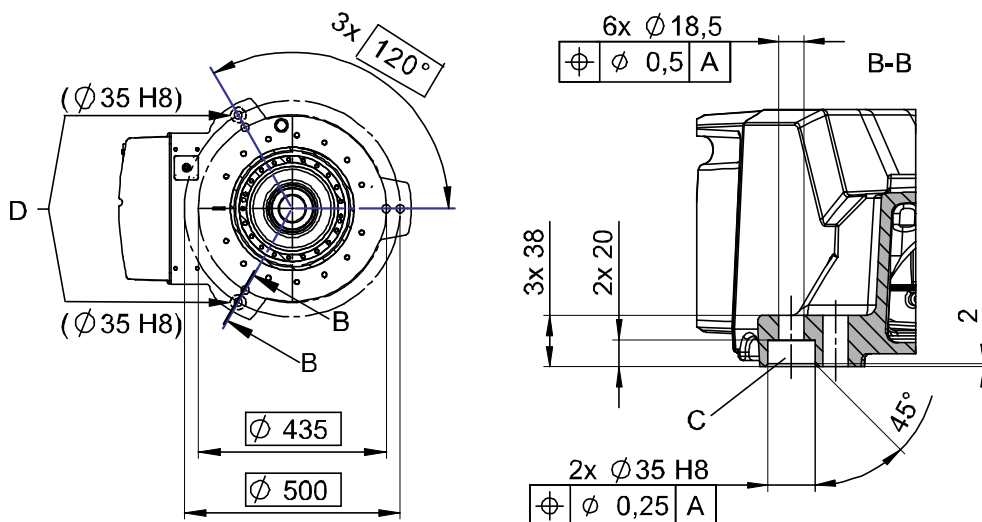


xx0800000436

### Note regarding $M_{xy}$ and $F_{xy}$

The bending torque ( $M_{xy}$ ) can occur in any direction in the XY-plane of the base coordinate system. The same applies to the transverse force ( $F_{xy}$ ).

### Fastening holes robot base



xx0800000271


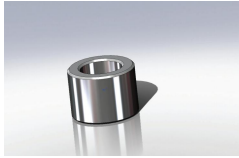
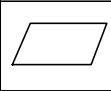
C	Hole for guide sleeve
D	Rear bolt holes

### Attachment bolts, specification

The table below specifies required bolts and washers for securing the robot at installation site.

Securing parts/Facts	Dimension	Note
Securing screws, oiled	M16 x 60 (installation directly on foundation) M16 x 70/80 (installation on foundation or base plate, using guide bushings) Quality 8.8	6 pcs 200 Nm
Washers	17 x 30 x 3	6 pcs

Continues on next page

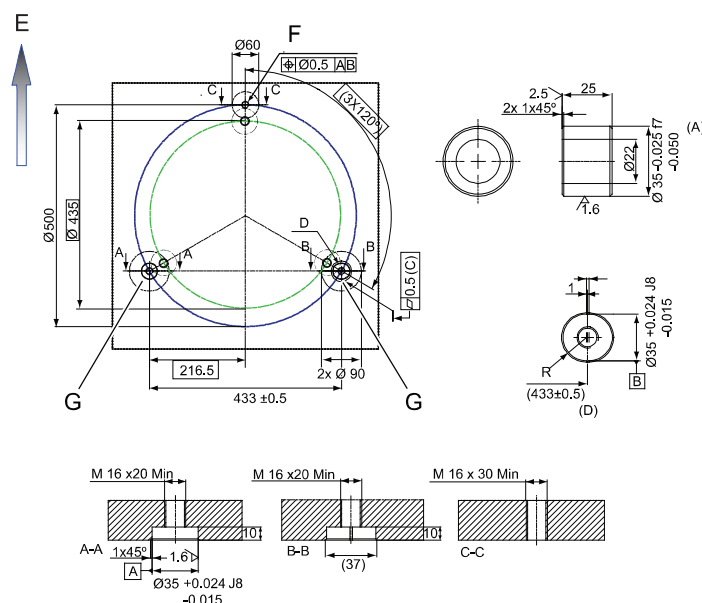
Securing parts/Facts	Dimension	Note
<p>Guide sleeves</p>  <p>武永康 13913235524 (微信同号)</p>		<p>Article number: 21510024-169, 2 pcs.</p> <p>Added to the rear bolt holes, to allow the same robot to be re-mounted without program adjustments.</p>  <p>xx1200000885</p>
<p>Level surface requirements</p>  <p>xx0300000251</p>	<p>0.5</p>	



### Note

For AbsAcc performance, the chosen guide holes according to Figure above are recommended

## Mounting surface and bushings



xx0900000392

(C)	3x common zone
E	Position of the front of the robot
F	4xM16 depth 30, minimum
G	Guide bushing (2 pcs)