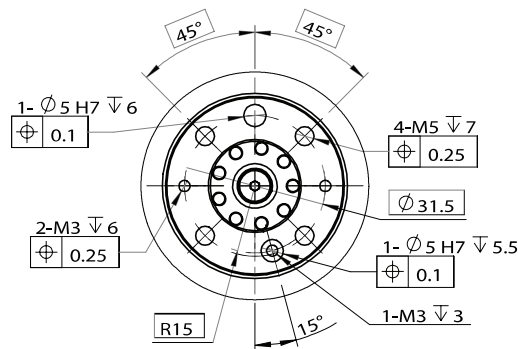
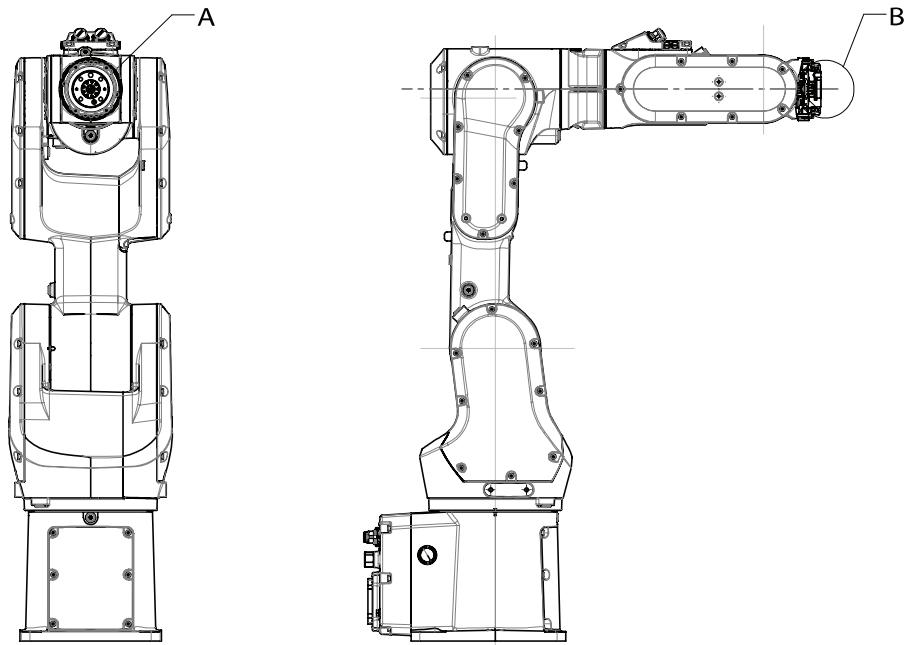


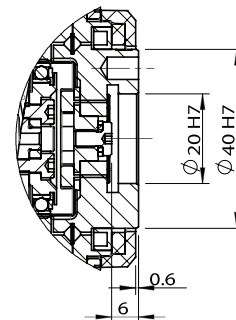
Tool flange standard



武永康
13913235524
(微信同号)



DETAIL A



DETAIL B

xx2300001052



CAUTION

To calibrate the axis 6, the notch on the wrist must be aligned with the marked pin hole on the tool flange. Before installing a tool on the tool flange, make sure a visible mark has been made to the tool at the corresponding position.

For details about the synchronization mark, see [Synchronization marks and synchronization position for axes on page 549](#).

Fastener quality

When fitting tools on the tool flange, only use screws with quality 12.9. For other equipment use suitable screws and tightening torque for your application.